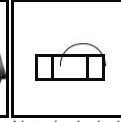


REF. 1110

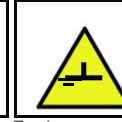
Waterfall in stainless steel AISI 316L
(Marine quality). Polish or satin finish.



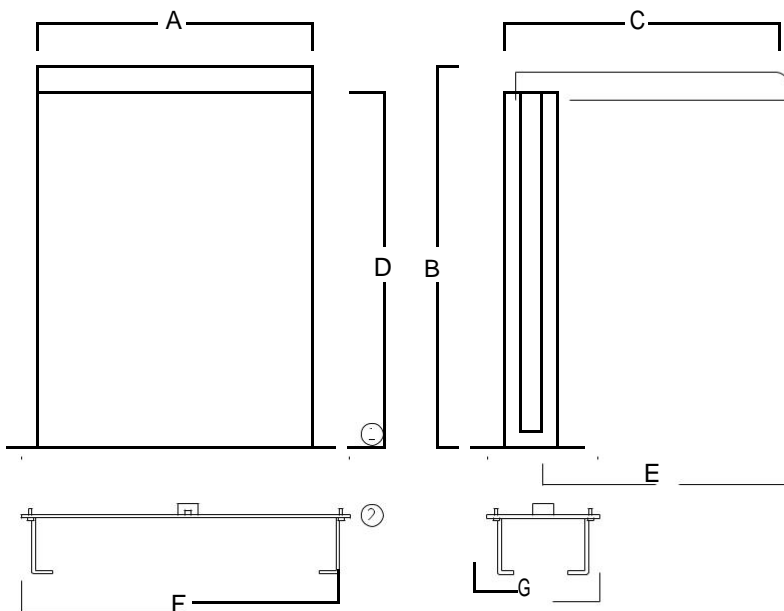
Support
Included



Nuts Included
(6 units)



Earth
Connection



A	B	C	D	E	F	G
300	700	500	650	450	400	200
11,81	27,56	19,69	25,60	17,72	15,75	07,87
500	700	500	650	450	600	200
19,69	27,56	19,69	25,60	17,72	23,62	07,87
700	700	500	650	450	800	200
27,56	27,56	19,69	25,60	17,72	31,50	07,87
1000	700	500	650	450	1100	200
39,37	27,56	19,69	25,60	17,72	43,31	07,87

Measure in mm
Measure in inch

- ① Nuts to fix waterfall.
② Support to embed in the ground level.

MOUNTING SYSTEM

- 1) Connect the water intake to the support with 2" female fitting.
- 2) Fix the earth connection to the support.
- 3) Embed the support to get for the platen at ground level.
- 4) Fix the waterfall with the nuts.
 - a) Impulsion tube 2" (Ø63mm).
 - b) Self-priming pump:
 - 1110 (300) 1hp - 17,3m³/h (Ref. AQA-B17).
 - 1110 (500) 1,5hp - 21,5m³/h (Ref. AQA-B21).
 - 1110 (700) 2hp - 26,6m³/h (Ref. AQA-B26).
 - 1110 (1000) 3hp - 38,8m³/h (Ref. AQA-B38).
 - c) Suction tube 2" (Ø63mm).

*Pneumatic or electric button to be defined in work.

